



EmpowHER the Future WITH PLANNED GIVING



At **EmpowHERment**, we are committed to creating lasting change and providing opportunities for generations to come. You have the power to make a difference through planned giving, ensuring that your legacy continues to empower women in our community.

JOIN OUR LEGACY CIRCLE

1 LEGACY BEQUESTS

Leave a lasting impact by including EmpowHERment in your will. Your gift will help us continue our mission to connect, inspire, support women!

2 LIFE INSURANCE POLICIES

Secure the future impact of our nonprofit through planned giving. Naming EmpowHERment as a beneficiary in your life insurance policy, empowers us to continue our mission.

3 CHARITABLE GIFT ANNUITIES

Establish a charitable gift annuity, receiving fixed payments for life, supporting EmpowHERment's vital work.

4 GIFTS OF RETIREMENT ASSETS

Designate EmpowHERment as a beneficiary of your retirement account, ensuring that your support lives on beyond your lifetime.



Contact our Planned Giving Specialist at Admin@EmpowHERment.org to discuss how you can tailor your planned giving to your personal and financial goals.



EmpowHER the Future WITH PLANNED GIVING



1 LEGACY BEQUESTS



As you reflect on your own legacy and the impact you wish to leave behind, consider the profound difference you can make by including EmpowHERment in your will.

How to Include EmpowHERment in Your Will:

Consult an Attorney: Start by consulting your attorney or estate planner to draft or update your will to include a bequest to EmpowHERment. They can guide you through the process and help you navigate any legal complexities.

Specify the Bequest: Clearly specify the amount or percentage of your estate that you wish to leave to EmpowHERment in your will. You can even choose to leave assets like stocks or property.

Contact EmpowHERment: Inform EmpowHERment about your intention to make a legacy bequest. They can ensure your gift is allocated in a way that aligns with your wishes.

Review and Update: As life circumstances change, remember to review and update your will to reflect your current intentions and financial situation.

EmpowHERment, a nonprofit organization dedicated to empowering and supporting women, has been at the forefront of creating positive change in the lives of countless women. A legacy bequest to this organization will not only honor your commitment to empowering women but also help ensure the continuity of their mission to connect, inspire, and support women for generations to come.

A legacy bequest is a powerful way to make a lasting impact on the causes that matter most to you. By including EmpowHERment in your will, you are contributing to the long-term sustainability of an organization dedicated to promoting the growth, self-confidence, and opportunities of women.

By making a legacy bequest to EmpowHERment, you are making a statement about the values that are important to you.



EmpowHER the Future WITH PLANNED GIVING



2

LIFE INSURANCE POLICIES



Including EmpowHERment in your life insurance policy is a meaningful way to support their work in empowering and supporting all women.

How to include EmpowHERment in your life insurance policy:

Including EmpowHERment in your life insurance policy is a thoughtful and impactful way to support our mission. It allows you to help empower women and make a meaningful difference in their lives.

Review Your Policy: Start by reviewing your existing life insurance policy or considering the purchase of a new one. Life insurance policies typically have a beneficiary designation, which is where you specify who will receive the policy's proceeds upon your passing.

Contact Your Insurance Provider: Contact your life insurance provider or agent. They can guide you through the process of updating your beneficiary designation. Let them know that you wish to name EmpowHERment to receive the policy's proceeds.

Provide EmpowHERment's

Information: You will need to provide the necessary information about EmpowHERment to your insurance provider. This usually includes the organization's legal name, address, and tax identification number (Employer Identification Number or EIN).

Specify the Amount: Confirm the amount or percentage of your life insurance policy's proceeds that you want to go to EmpowHERment. This allows you to customize your support according to your wishes.

Review and Confirm: After you've made the necessary changes, review and confirm the beneficiary designation with your insurance provider.

Inform EmpowHERment: It's a good practice to inform EmpowHERment of your decision. This will allow them to provide any necessary documentation, such as their tax identification number, to ensure a smooth process.

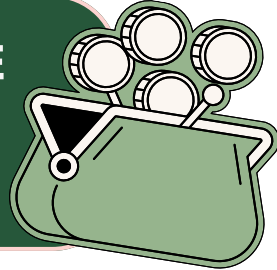


EmpowHER the Future WITH PLANNED GIVING



3

CHARITABLE GIFT ANNUITIES



Including EmpowHERment in your life insurance policy is a meaningful way to support their work in empowering and supporting all women.

How to include EmpowHERment in your life insurance policy:

Including EmpowHERment in your life insurance policy is a thoughtful and impactful way to support our mission. It allows you to help empower women and make a meaningful difference in their lives.

Review Your Policy: Start by reviewing your existing life insurance policy or considering the purchase of a new one. Life insurance policies typically have a beneficiary designation, which is where you specify who will receive the policy's proceeds upon your passing.

Contact Your Insurance Provider: Contact your life insurance provider or agent. They can guide you through the process of updating your beneficiary designation. Let them know that you wish to name EmpowHERment to receive the policy's proceeds.

Provide EmpowHERment's

Information: You will need to provide the necessary information about EmpowHERment to your insurance provider. This usually includes the organization's legal name, address, and tax identification number (Employer Identification Number or EIN).

Specify the Amount: Confirm the amount or percentage of your life insurance policy's proceeds that you want to go to EmpowHERment. This allows you to customize your support according to your wishes.

Review and Confirm: After you've made the necessary changes, review and confirm the beneficiary designation with your insurance provider.

Inform EmpowHERment: It's a good practice to inform EmpowHERment of your decision. This will allow them to provide any necessary documentation, such as their tax identification number, to ensure a smooth process.